

MY FAITH LOOKS UP TO THEE

Words by Ray Palmer

Music by Bobby Guy

Capo I



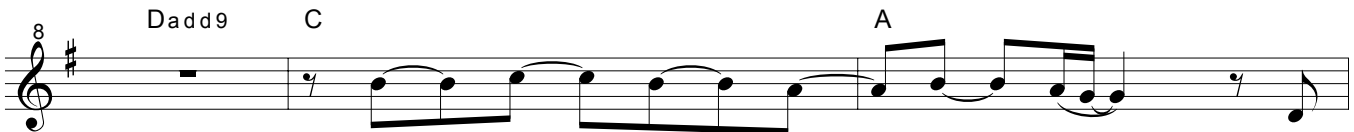
1. My faith looks up to Thee,
 2. May Thy rich grace im - part
 3. While life's dark maze I tread,
 4. When ends life's tran - sient dream,



Thou Lamb of Cal - va - ry,
 Strength to my faint - ing heart,
 And griefs a - round me spread,
 When death's cold sul - len stream



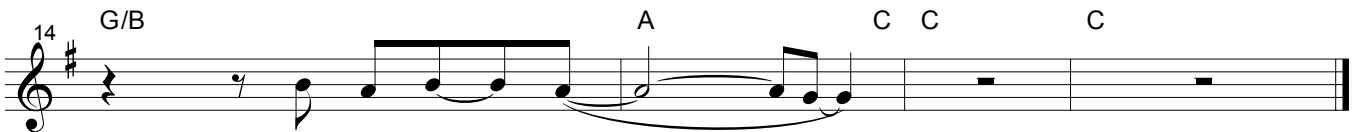
Sav - ior di - vine! Now hear me while I pray,
 my zeal in - spire! As Thou hast died for me,
 be Thou my Guide; Bid dark - ness turn to day,
 o - ver me roll; Blest Sav - ior, then in love,



take all my guilt a - way, and
 O may my love to Thee,
 wipe sor - row's tears a - way,
 fear and dis - trust re - move;



O _____ let me from this day
 Pure _____ warm, and change - less be,
 Nor _____ let me ev - er stray
 O _____ bear me safe a - bove,



be whol - ly _____ Thine! _____
 a liv - ing _____ fire! _____
 from Thee a - side. _____
 a ran - somed _____ soul! _____